



Center for iPS Cell Research and Application, Institute for Integrated Cell-Material Sciences, Kyoto University



Director: Shinya Yamanaka

Application Guideline: Principal Investigator

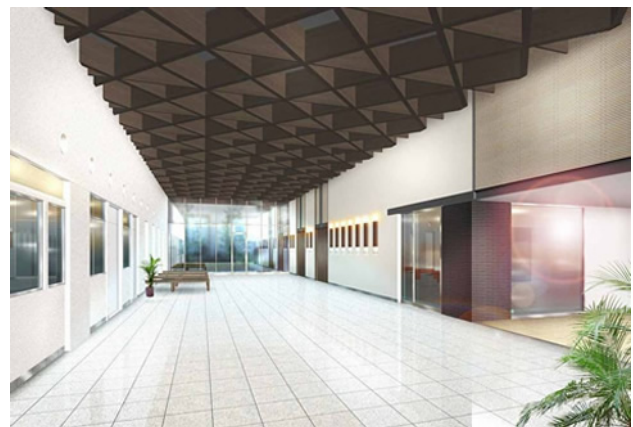
Job Title: Associate Professor or Professor (both as Principal Investigator) at Center for iPS Cell Research and Application, Institute for Integrated Cell-Material Sciences, Kyoto University

Vacancies: A few

Workplace: Center for iPS Cell Research and Application(CiRA), Institute for Integrated Cell-Material Sciences, Kyoto University (Kawara-cho 53, Shogoin, Sakyo-ku, Kyoto 606-8507, Japan) OR another research facility in the city

<Illustrations of the new CiRA building>

*It is under construction and will be completed in February 2010.



- Job Description:**
- 1) Research on integrative elucidation of iPS cell induction process utilizing bioinformatics
 - 2) Research on effective differentiation induction from iPS cell to endodermal tissue cell, especially pancreatic cell and hepatocyte.
 - 3) Research on molecular pathology of various disorders utilizing disease-specific iPS cell
 - 4) Other research aiming at clinical application utilizing advantages of iPS cell

Starting Date: January 2009 or after (Negotiable)

Ending Date: September 30, 2012 (Possibly renewable)

Pay: To be determined in accordance with Kyoto University Regulations. (Annual salary)

Application Docs:

- 1) CV
- 2) Lists of acquired research funds, publications, presentations, and patents
- 3) A brief summary of scientific achievements (3-10 pages)
- 4) Research plan (3-10 pages).

Please state your research policy and targets at CiRA for the period:

- a) until September 2012 and
- b) 5 years after that.

* Policy of Research: Please describe the policy of research dividing in two parts, short-term plan for first 4 years (until September 2012) and long-term plan for another 5 years.

Please be advised that your application documents will NOT be returned to you.

Application Deadline: November 30, 2008

Screening Process: Candidates will be screened based on application documents submitted and by an interview (or a series of interviews) as needed. Candidates will be notified of the results in writing.

Notes: If hired:

- 1) You will be an individual, fixed-term associate professor or professor in accordance with Kyoto University Regulations.
It will NOT be definite which post you are to fill at the time of acceptance.
- 2) Whereas you are likely to be appointed as an associate professor, a professor position is a possibility depending on your credentials.
It is also possible to be promoted to professor after hired as an associate professor.
- 3) The initial term ends on September 30, 2012. You will be assessed by the internal and external evaluation committee several months before then, and in turn, the term could be extended for another 5 years (conceivably 10 years).

You are expected to read the "Message from the Director" posted on the homepage of CiRA's website carefully prior to submitting your application documents. The above "4) Research plan" should be prepared taking that into account.

Postal Address: Yoshida Konoe-cho 69, Sakyo-ku, Kyoto 606-8501, Japan
CiRA Support Office, iCeMS, Kyoto University

Please be sure to clearly state "Application for CiRA PI" on the envelope, enclosing the above 4 application documents in it, and mail it to the above postal address **by November 30, 2008.**
Keep in mind that applying by Email is not acceptable.

Contact: Shogoin Kawara-cho 53, Sakyo-ku, Kyoto 606-8507, Japan

Attention: Tetsuya ISHII

Department of Stem Cell Biology,

Institute for Frontier Medical Sciences,

Kyoto University

Phone: 81-75-751-4059

Email: collaboration@frontier.kyoto-u.ac.jp