

(b)

S-U4 primer	CTG CAG TGC TGG GAG CGG AAA TAA AT
S-L1 primer	CCT GCG TGC AAT CCA TCT TGT TCA AT
S-L4 primer	TTT GGC GGC TTG ACA ACG AAG AAT CT

(c)

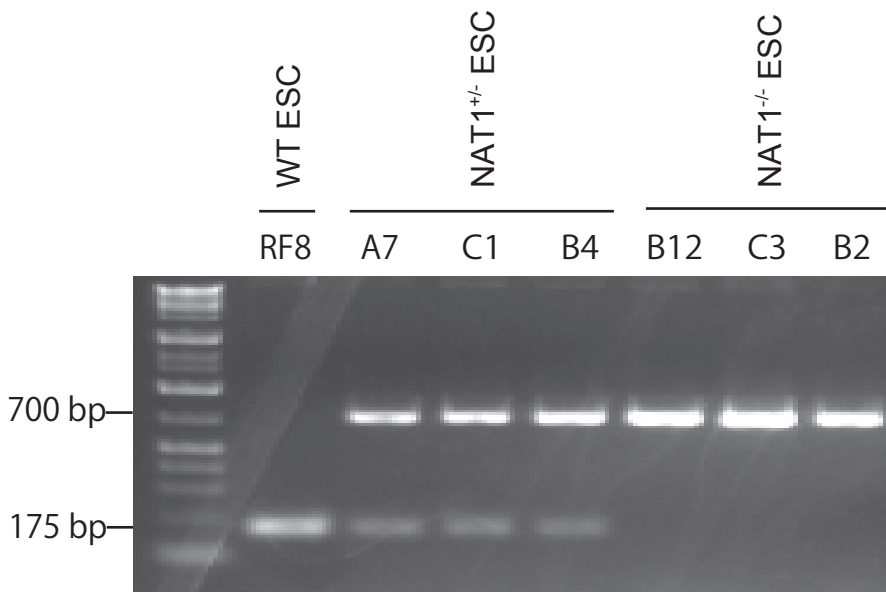


Fig. Genomic PCR of NAT1 KO ESC

(a) Structures of the NAT1 genomic locus (b) primers for NAT1 genotyping (c) genomic PCR analysis.

PCR analysis shows the genotype of WT (175 bp), NAT1<sup>+/-</sup> (700 bp, 175 bp,) and NAT1<sup>-/-</sup> (700 bp) ESC clones.

Data from experiments in 2011.